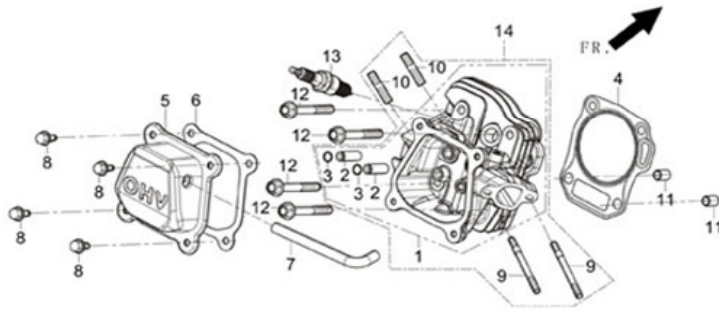


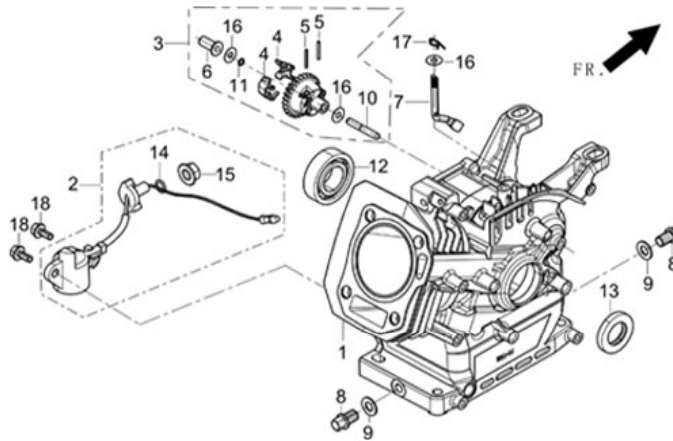
POWERSMART G2200

FIG.1 CYLINDER HEAD, CYLINDER COVER ASSY (E04)



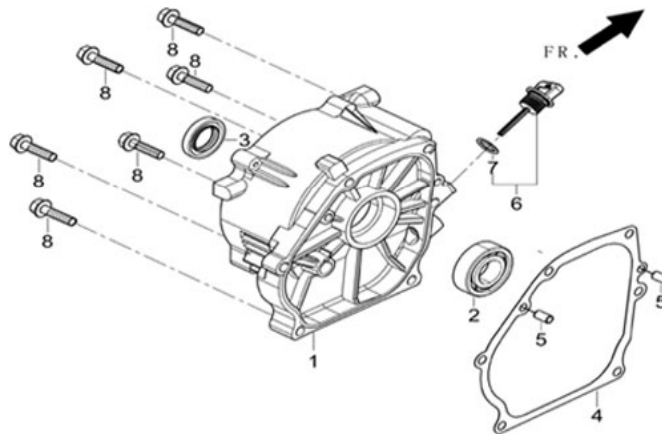
REF.NO.	PART NO	DESCRIPTION	Q'TY	UNIT PRICE
E04-1	12140-Z040210-0000	HEAD SUBASSEMBLY, CYLINDER	1	
E04-4	12004-Z440110-0000	GASKET, CYLINDER HEAD	1	
E04-5	12410-Z010220-H300	COVER SUBASSEMBLY, CYLINDER HEAD	1	
E04-6	12004-Z010110-0000	COVER SUBASSEMBLY, CYLINDER HEAD	1	
E04-7	17004-Z010110-0000	TUBE, BREATHER	1	
E04-8	90001-0612-03	BOLT	4	
E04-9	90204-Z010210-0000	PLUG, SPARK	2	
E04-10	90203-Z010110-0000	PLUG, SPARK	2	
E04-11	90502-1014-00	PIN	2	
E04-12	12003-Z010110-0000	BOLT, CYLINDER HEAD	4	
E04-13	30010-Z010210-0000	PLUG, SPARK	1	

FIG.2 CRANKCASE (E17)



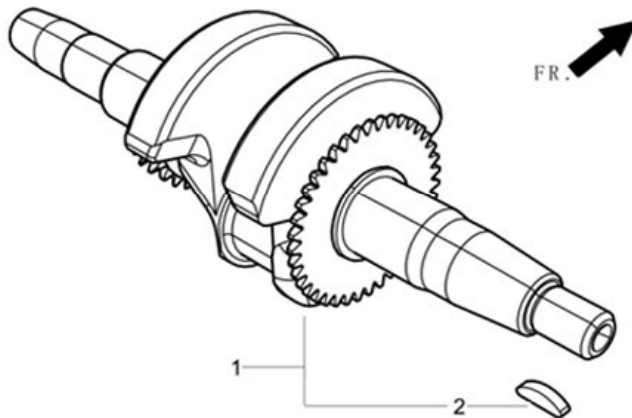
REF.NO.	PART NO	DESCRIPTION	Q'TY	UNIT PRICE
E17-1	11310-Z040510-0000	CRANKCASE SUBASSEMBLY.	1	
E17-2	37060-Z010110-0000	SENSOR, ENGINE OIL	1	
E17-3	16400-Z010210-0000	GEAR ASSY, GOVERNOR	1	
E17-7	16061-Z010110-0000	ARM, GOVERNOR	1	
E17-8	11007-Z010110-0000	BOLT, DRAIN PLUG	2	
E17-9	90408-Z010110-0000	WASHER	2	
E17-12	90547-0205-00	BEARING	1	
E17-13	90682-Z300110-0000	SEAL, OIL	1	
E17-16	90408-Z010210-0000	WASHER, GOVERNOR GEAR	3	
E17-17	90501-Z010110-0000	PIN	1	
E17-18	90001-0614-01	BOLT	2	

FIG.3 COVER, CRANKCASE (E01)



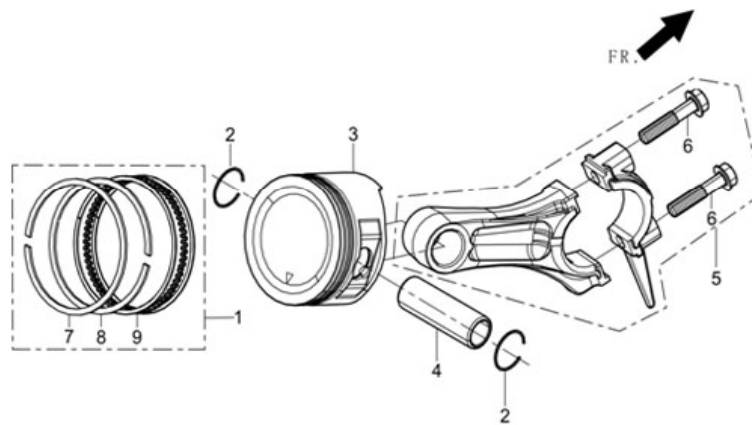
REF.NO.	PART NO	DESCRIPTION	Q'TY	UNIT PRICE
E01-1	11411-Z040210-0000	COVER, CRANKCASE	1	
E01-2	90547-0205-00	BEARING	1	
E01-3	90682-Z010110-0000	SEAL, OIL	1	
E01-4	11001-Z010120-0000	GASKET, CRANKCASE	1	
E01-5	90502-0812-00	PIN	2	
E01-6	15010-Z010110-Q500	DIPSTICK SUBASSEMBLY, OIL	1	
E01-8	90001-0832-01	BOLT	6	

FIG.4 CRANKSHAFT ASSY. (E03)



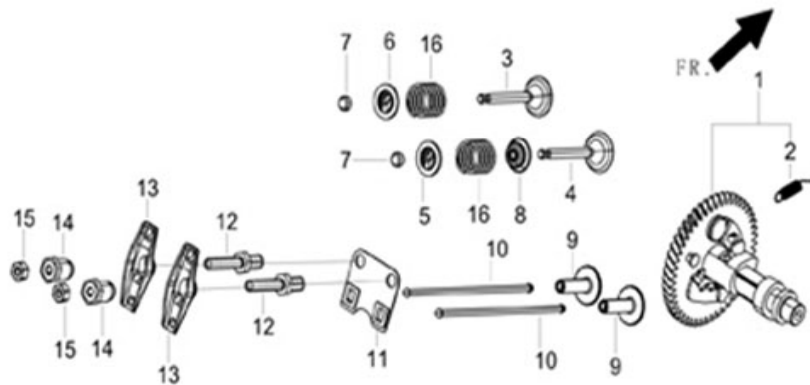
REF.NO.	PART NO	DESCRIPTION	Q'TY	UNIT PRICE
E03-1	13300-Z040110-0000	CRANKSHAFT ASSY.	1	

FIG.5 PISTON/CONNECTING ROD (E03)



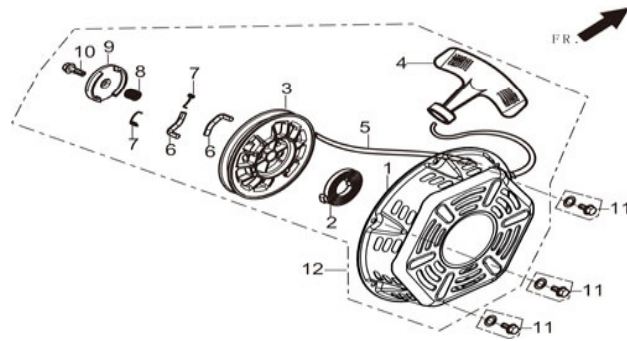
REF.NO.	PART NO	DESCRIPTION	Q'TY	UNIT PRICE
E03-2	13122-Z010110-0000	CLIP, PISTON PIN	2	
E03-3	13111-Z040120-0000	PISTON	1	
E03-4	13121-Z010110-0000	PIN, PISTON	1	
E03-5	13010-Z010110-0000	ROD, CONNECTING	1	
E03-7	13201-Z040110-0000	RING, THE FIRST	1	
E03-8	13202-Z040110-0000	RING, THE SECON	1	
E03-9	13210-Z040110-0000	RING SET, OIL	1	
		PISTON RING SET	1	

FIG.6 CAMSHAFT ASSY. (E05)



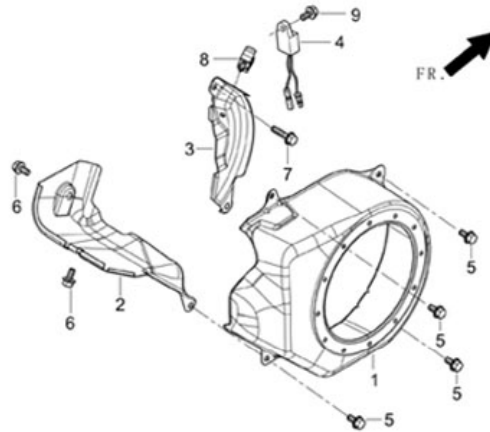
REF.NO.	PART NO	DESCRIPTION	Q'TY	UNIT PRICE
E05-1	14200-Z300110-0000	CAMSHAFT ASSY.	1	
E05-3	12121-Z010110-0000	VALVE, EXHAUST	1	
E05-4	12111-Z010110-0000	VALVE, INTAKE	1	
E05-5	12112-Z010110-0000	SEAT, VALVE SPRING	2	
E05-6	12107-Z010110-0000	RETAINER, EXHAUST VALVE	1	
E05-7	12104-Z010110-0000	RATATOR, VALVE	2	
E05-8	12101-Z010110-0000	GUIDE, SEAL	1	
E05-9	14081-Z040110-0000	TAPPET, VALVE	2	
E05-10	14071-Z010110-0000	LIFTER, VALVE	2	
E05-11	14090-Z010110-0000	PLATE SUBASSEMBLY, LIFTER STOPPER	1	
E05-12	14313-Z010110-0000	BOLT, VALVE ADJUSTING	2	
E05-13	14311-Z010110-0000	ROCKER, VALVE	2	
E05-14	14314-Z010110-0000	NUT, VALVE ADJUSTING	2	
E05-15	14312-Z010110-0000	BOLT, VALVE ADJUSTING	2	
E05-16	12103-Z010110-0000	SPRING, VALVE	2	

FIG.7 STARTER (E08)



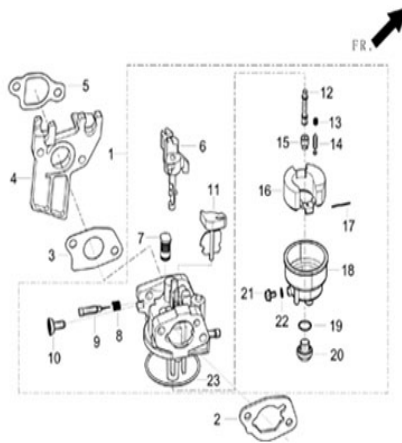
REF.NO.	PART NO	DESCRIPTION	Q'TY	UNIT PRICE
E08-11	90251-0608-01	BOLT	3	
E08-12	28200-Z440110-H700	STARTER ASSY, RECOIL	1	

FIG.8 SHROUD (E14)



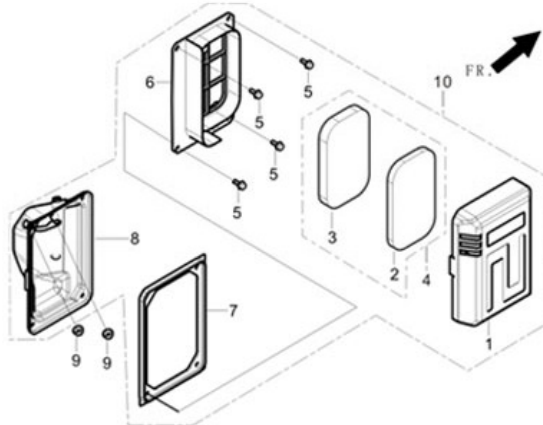
REF.NO.	PART NO	DESCRIPTION	Q'TY	UNIT PRICE
E14-1	28110-Z300120-Y100	SHROUD	1	
E14-2	19304-Z010110-0000	SHROUD, CYLINDER BODY	1	
E14-3	19340-Z010120-0000	SHIELD, LOWER	1	
E14-4	37050-Z010210-0000	PROTECTOR, OIL	1	
E14-5	90001-0612-03	BOLT	4	
E14-6	90001-0610-01	BOLT	2	
E14-7	90001-0616-01	BOLT	1	
E14-8	90740-Z010110-0000	COLLAR	1	
E14-9	90001-0610-01	BOLT	1	

FIG.9 CARBURETOR ASSY. (E11)



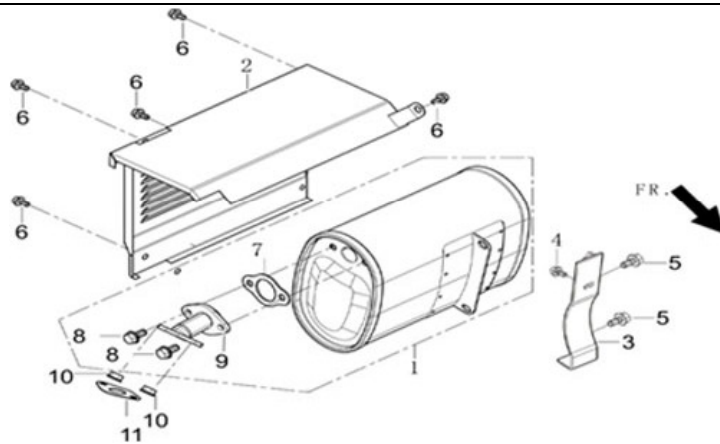
REF.NO.	PART NO	DESCRIPTION	Q'TY	UNIT PRICE
E11-1	16100-Z140610-0000	CARBURETOR ASSY.	1	
E11-2	17001-Z010110-0000	GASKET, AIR CLEANER	1	
E11-3	16001-Z010110-0000	GASKET, CARBURETOR	1	
E11-4	16003-Z010110-0000	PLATE, CARBURETOR INSULATOR	1	
E11-5	16002-Z010110-0000	GASKET, CARBURETOR INSULATOR	1	

FIG.10 AIR CLEANER (F02)



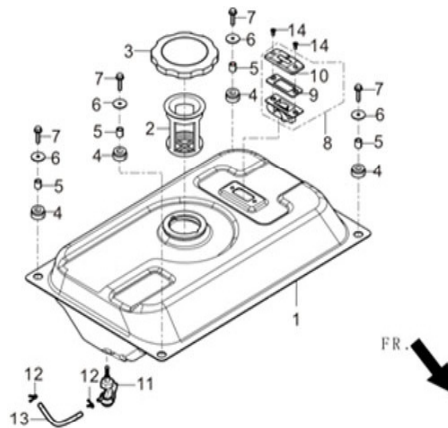
REF.NO.	PART NO	DESCRIPTION	Q'TY	UNIT PRICE
F02-4	17151-Z300210-0000	AIR CLEANER ELEMENT COMPLETE	1	
F02-9	90305-0600-33	NUT	2	
F02-10	17100-Z010310-0000	CLEANER, AIR	1	

FIG.11 MUFFLER ASSY. (F04)



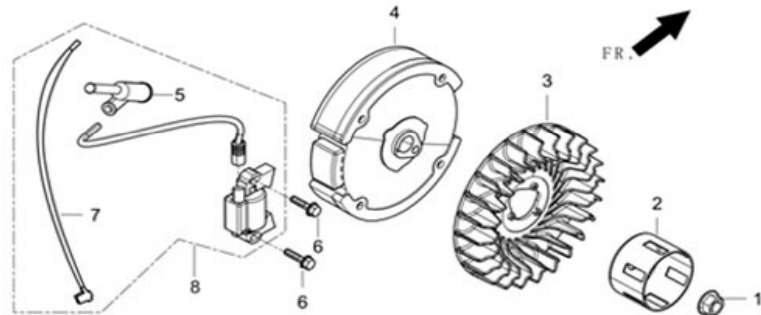
REF.NO.	PART NO	DESCRIPTION	Q'TY	UNIT PRICE
F04-1	18100-Y020120-0000	MUFFLER ASSY.	1	
F04-2	18130-Y020110-H300	COVER, MUFFLER OUTER	1	
F04-3	18030-Y020110-H300	BRACKE,MUFFLER MUFFLER	1	
F04-4	90001-0612-01	BOLT	1	
F04-5	90001-0816-03	BOLT	2	
F04-6	90007-0612-A3	BOLT	5	
F04-10	90303-0800-33	NUT	2	
F04-11	18001-Z010110-0000	GASKET, EXHAUST OUTLET	1	

FIG.12 TANK, FUEL (F01)



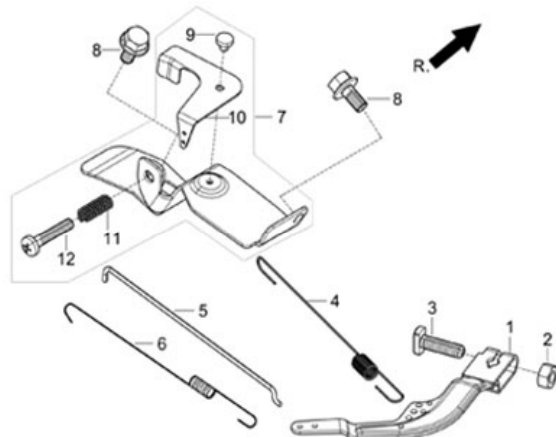
REF.NO.	PART NO	DESCRIPTION	Q'TY	UNIT PRICE
F01-1	16620-Y430110-H700	TANK, FUEL	1	
F01-2	16652-Y020120-0000	STRAINER, FUEL	1	
F01-3	16730-Y020130-0300	COVER, FUEL TANK	1	
F01-4	16601-Y020120-0000	SLEEVE, FUEL TANK RUBBER	4	
F01-5	90683-Y020110-0000	BUSH	4	
F01-6	90408-Y020110-0000	WASHER	4	
F01-7	90007-0625-A3	BOLT	4	
F01-8	37200-Y020120-H300	LEVELER ASSY, OIL	1	
F01-11	16750-Y020110-0000	COCK ASSY, FUEL	1	
F01-12	90740-Z010210-0000	COLLAR	2	
F01-13	90686-Z010610-0000	TUBE, FUEL	1	
F01-14	90104-0512-53	SCREW	2	

FIG.13 FLYWHEEL SUBASSEMBLY (E15)



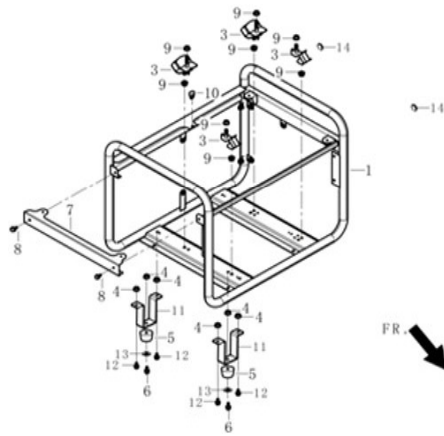
REF.NO.	PART NO	DESCRIPTION	Q'TY	UNIT PRICE
E15-1	13501-Z010110-0000	NUT, FLYWHEEL	1	
E15-2	28002-Z260110-0000	PULLEY, STARTER	1	
E15-3	19352-Z010210-0000	IMPELLER	1	
E15-4	13510-Z010110-0000	FLYWHEEL SUBASSEMBLY	1	
E15-6	90001-0625-01	BOLT	2	
E15-8	30400-Z440110-0000	COIL, IGNITION	1	

FIG.14 CONTORL ASSY. (E13)



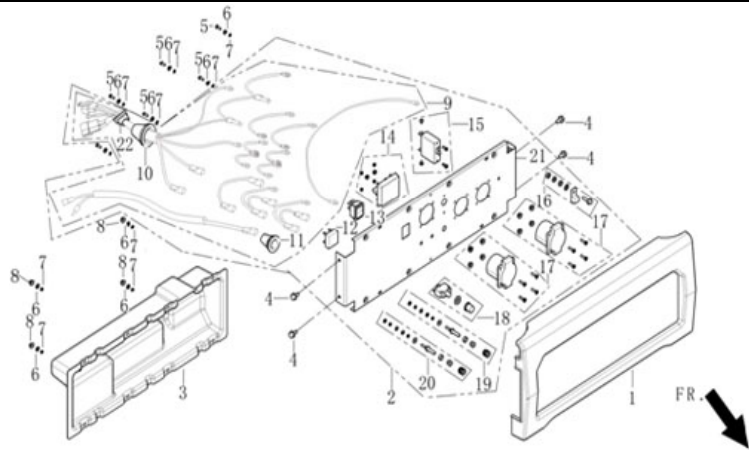
REF.NO.	PART NO	DESCRIPTION	Q'TY	UNIT PRICE
E13-1	16070-Z010110-0000	SUPPORT SUBASSEMBLY, GOVERNOR	1	
E13-2	90305-0600-31	NUT	1	
E13-3	16072-Z010110-0000	BOLT, GOVERNOR SUPPORT	1	
E13-4	16063-Z010210-0000	SPRING, GOVERNOR	1	
E13-5	16062-Z010210-0000	ROD, GOVERNER	1	
E13-6	16012-Z010110-0000	SPRING, THROTTLE VALVE RETURNING	1	
E13-7	16520-Z040110-0000	CONTROL ASSY, THROTTLE	1	
E13-8	90001-0612-03	BOLT	2	

FIG.15 FRAME, ENGINE (F61)



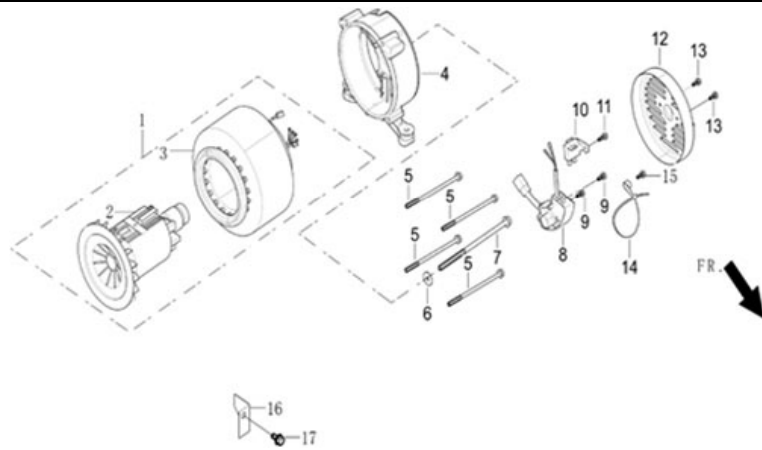
REF.NO.	PART NO	DESCRIPTION	Q'TY	UNIT PRICE
F61-1	51100-Y020210-QC00	FRAME ASSY, ENGINE	1	
F61-2	51005HY020120-0000	CUSHION, ENGINE FRAME	2	
F61-3	51011HY020120-0000	CUSHION, ENGINE FRAME RIGHT	2	
F61-4	90305-0800-33	NUT	6	
F61-5	51014-Y020210-0000	SEAT, ENGINE FRAME SHOCK ABSORPTION	2	
F61-6	90001-0825-03	BOLT	2	
F61-7	51150-Y020120-QC00	CROSSPIECE SUBASSEMBLY	1	
F61-8	90007-0612-A3	BOLT	2	
F61-9	90305-0800-31	NUT	8	
F61-10	16602-Y020130-0000	GASKET, FUEL TANK RUBBER	1	
F61-11	51016-Y020310-QC00	SUPPORT, ENGINE FRAME SHOCK ABSORPTION	2	
F61-12	90001-0816-03	BOLT	4	
F61-13	90408-1000-E1	WASHER	2	
F61-14	90722-Y020110-0000	PLUG, END	2	

FIG.16 PANEL SUBASSEMBLY, CONTROL(F62)



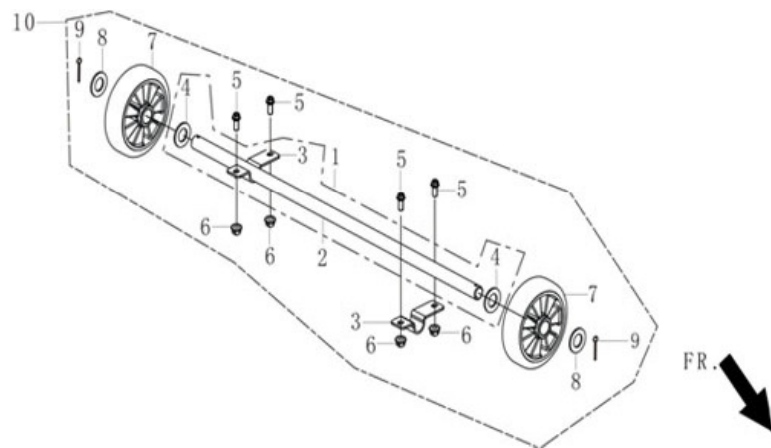
REF.NO.	PART NO	DESCRIPTION	Q'TY	UNIT PRICE
F62-1	35680-Y020120-Q200	SEAT, PANEL	1	
F62-2	35610-Y020120-Y100	PANEL SUBASSEMBLY, CONTROL	1	
F62-3	35680-Y130110-Q200	CASE, PANEL REAR	1	
F62-4	90007-0612-A3	BOLT	4	
F62-5	90106-0410-51	SCREW	6	
F62-6	90408-0400-E1	WASHER	10	
F62-7	90403-0400-01	WASHER	10	
F62-8	90305-0400-71	NUT	4	
F62-12	35621-Y020110-0000	BRIDGE, RECTIFICATION	1	
F62-13	35160-Y020110-0000	SWITCH SUBASSEMBLY	1	
F62-14	37114-Y390110-0000	VOLTMETER	1	
F62-15	35645-Y020110-0000	BREAKER	1	
F62-17	35614-Y020110-0000	SOCKET SUBASSEMBLY, POWER SUPPLY	2	
F62-18	31234-Y020110-0000	PROTECTOR, OVERCURRENT	1	
F62-19	35634-Y020110-0000	TERMINAL, NEGATIVE ELECTRODE	1	
F62-20	35633-Y020110-0000	TERMINAL, POSITIVE ELECTRODE	1	

FIG.17 ROTOR/STATOR (F63)



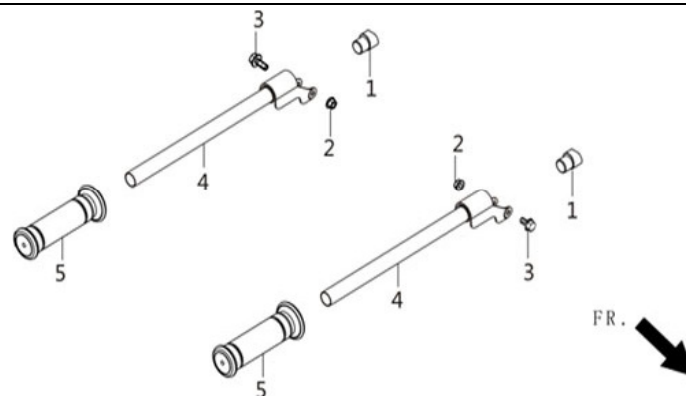
REF.NO.	PART NO	DESCRIPTION	Q'TY	UNIT PRICE
F63-1	31300-Y020510-0000	MOTOR ASSY	1	
F63-4	30021-Y020110-0000	BRACKET, MOTOR	1	
F63-5	30048-Y020120-0000	BOLT	4	
F63-6	90408-Y020210-0000	WASHER	1	
F63-7	30049-Y020120-0000	BOLT	1	
F63-8	30060-Y025110-0000	REGULATOR, VOLTAGE	1	
F63-9	90001-0512-01	BOLT	2	
F63-10	31320-Y020120-0000	BRUSH SUBASSEMBLY, CARBON	1	
F63-11	90001-0512-01	BOLT	1	
F63-12	30022-Y020110-Y100	COVER, MOTOR TAIL	1	
F63-13	90001-0512-03	BOLT	2	
F63-14	90727-Y020110-0000	BAND	1	
F63-15	90001-0514-01	BOLT	1	
F63-16	30023-Y020110-0000	STOPPER, MOTOR RIGHT COVER	1	
F63-17	90007-0612-A1	BOLT	1	

FIG.18 WHEEL ASSY,FRONT(F17)



REF.NO.	PART NO	DESCRIPTION	Q'TY	UNIT PRICE
F17-1	44020-Y020110-QC00	SHAFT, FRONT WHEEL	1	
F17-3	51126-Y020110-QC00	CLIP, WHEEL SHAFT FIXING LOWER	1	
F17-5	90001-0816-03	BOLT	4	
F17-6	90305-0800-33	NUT	4	
F17-7	44110-Y020110-0000	WHEEL, FRONT	2	
F17-8	90408-2000-E1	WASHER	2	
F17-9	90501-0436-01	PIN	2	

FIG.19 FRAME, ENGINE (F07)



REF.NO.	PART NO	DESCRIPTION	Q'TY	UNIT PRICE
F07-1	54102-Y020110-0000	SEAT,HANDLE TUBE CONNECTING	2	
F07-2	90310-0800-33	NUT	2	
F07-3	90001-0840-03	BOLT	2	
F07-4	54110-Y020110-QC00	TUBE HANDLE	2	
F07-5	54101-Y020110-0000	SLEEVE, HANDLE RUBBER	2	